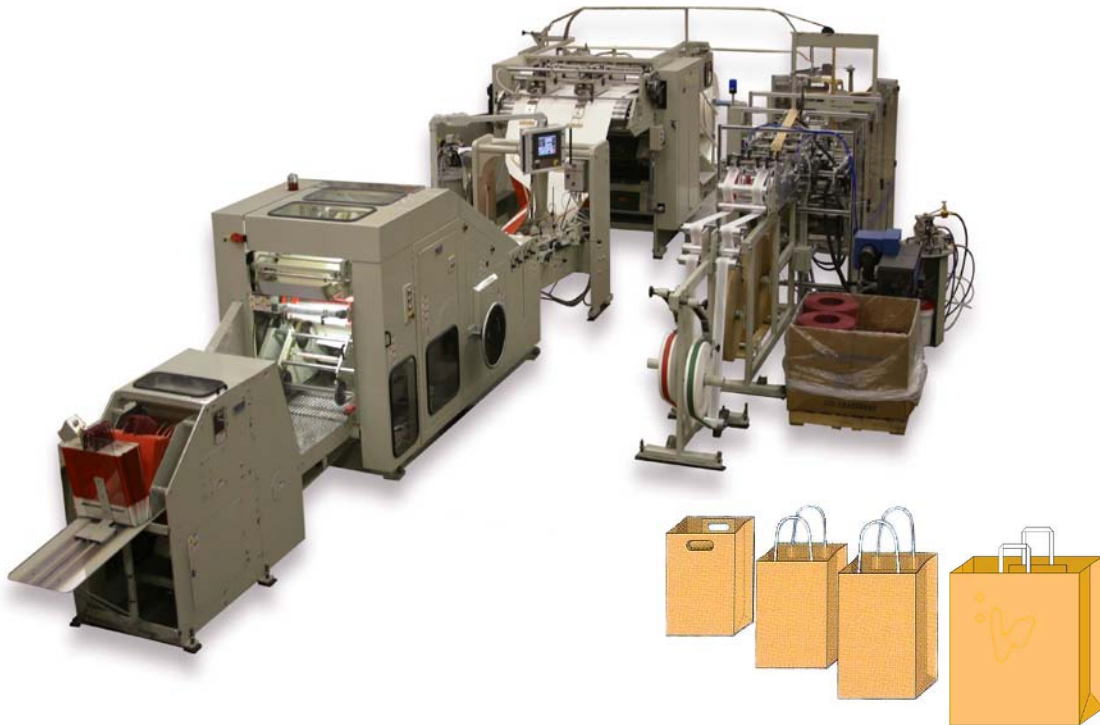


Model CHB-TF Shopping Handle Bag Machine



Sophisticated shoppers state their preference for paper shopping bags. Their choice is based on appearance, convenience, and the prestige of a high fashion shopping bag. Advertisers and shopkeepers are choosing the stylish paper bag as well, to project an image of quality.

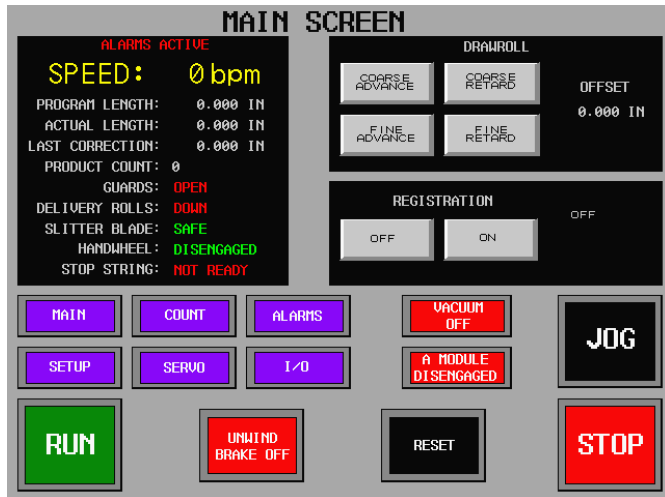
The Weber Model CHB-TF bag machine offers higher volume output than alternative forms of bag making to meet the growing demand for high quality paper shopping bags. Consistent formation and application of materials to produce twisted and flat handles for shopping bags are standard performance features of this equipment. It is designed to generate more profits through expanded sales potentials within a dynamic market.

Performance for Quality Production

The Weber CHB-TF consists of two basic machines: handle forming and handle application modules, operating in combination with a bag making machine. The handle forming section forms handle material into concentric loops and bonds them between two paper strips. These strips are slit and transferred to the application module where they are cut into right-hand and left-hand handle assemblies.

The handle application module applies a precise pattern of adhesive to the bag paper web, then applies handle assemblies to the adhesive pattern. Handles are compressed to the web with a series of rollers. With handles attached, the paper web is drawn into the bag machine forming complete shopping bags.

Optimum production can be achieved by combining a 7CHB-TF with Model 7FW Bag Machine. With the addition of the Flat Handle attachment, this equipment produces both twisted and flat handle bags. Reinforced Die Cut Handle components are also available for added production capabilities. For twisted handle, flat handle, or die cut handle bag production, look to H.G. Weber 7FW/7CHB-TF for quality shopping handle bags efficiently produced in one machine line.



OPTIONAL FEATURE

- ◆ Reinforced Die Cut Handle Capabilities available with 7FW/7CHB-TF

WIDTH RANGE CHANGES

* With optional 5 - 10" bottom, maximum bag width is limited by maximum paper width of 51" for bag bottoms larger than 7". For example a 10" bottom has a 15" face maximum.

MACHINE MODEL 7CHB-TF		
Width	Inches	*8 1/2 – 18
	mm	*215 – 457
Bottom	Inches	3 1/2 – 7 *5 – 10 (optional)
	mm	90 – 180 *127 – 254 (optional)
Tube Length	Inches	15 – 25
	mm	380 – 635
Twisted Handle Size	Inches	4
	mm	100
Flat Handle Sizes	Inches	3.125
	mm	80
Paper Plies		1

H.G. WEBER & CO., INC.

725 Fremont Street
Kiel, Wisconsin 53042 U.S.A.

Phone: 920-894-2221
FAX: 920-894-3786

FLEXIBLE PACKAGING MACHINERY

E-mail: bagmachines@hgweber.com
Web Site: www.hgweber.com