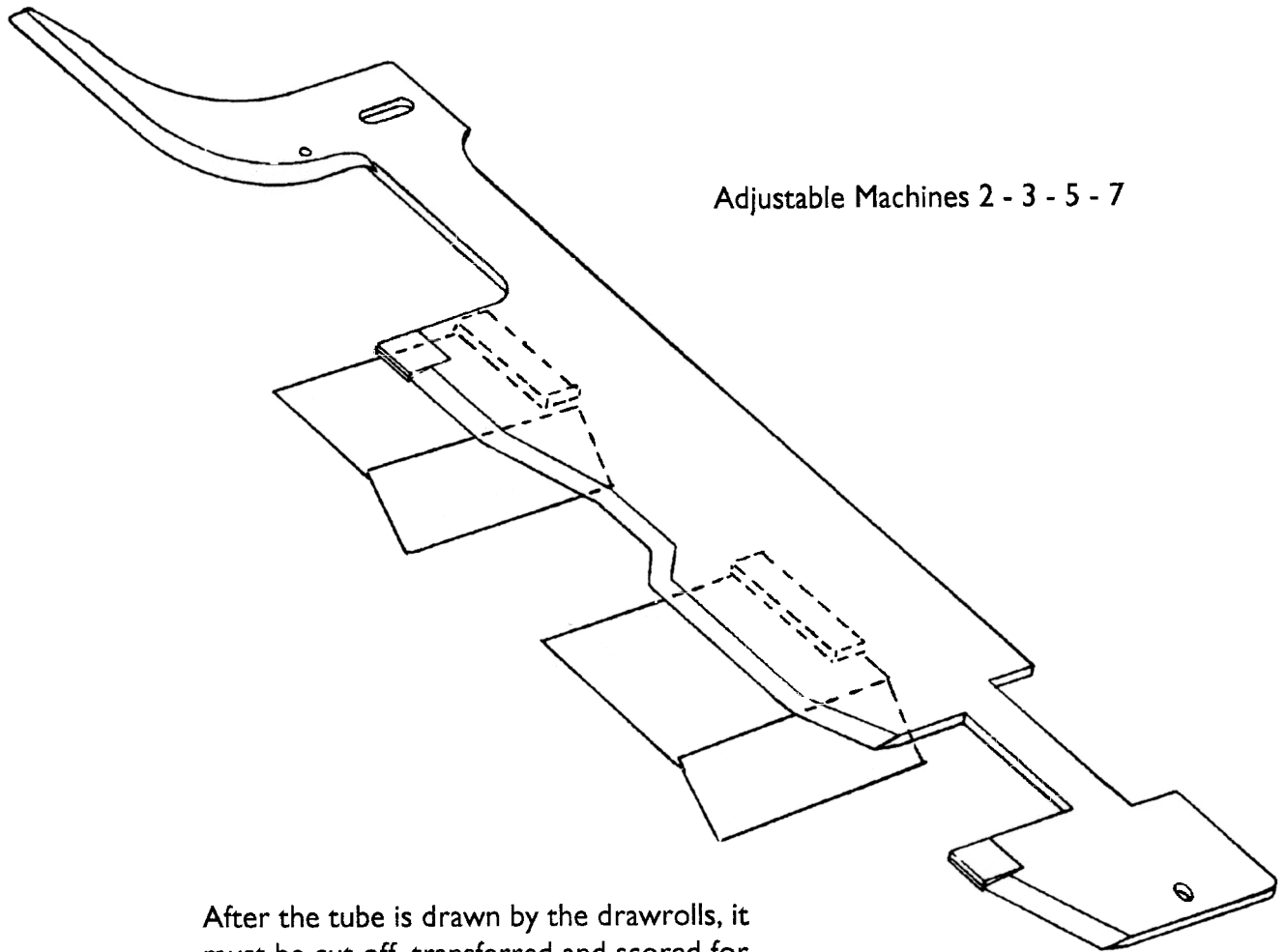




## **SIDE GUIDE PLATES**

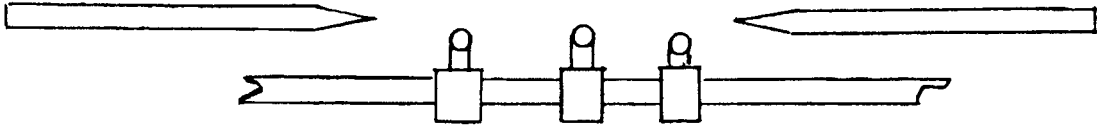
With Improved Lower Supports



Adjustable Machines 2 - 3 - 5 - 7

After the tube is drawn by the drawrolls, it must be cut off, transferred and scored for proper bottom folding. These plates hold the gusset open while the tube is transferred from drawrolls to opening stations. The gussets must be open to allow the drum and opening fingers to enter properly.

## INDIVIDUAL RODS & COLLARS



The previous method of support under the tube between stations was the use of rods on collars.

These rods did not always support the lower face of the tube flat.

They were also difficult to adjust when changing tube widths.

## FLAT SUPPORT PLATES ATTACHED TO GUIDE PLATES



The latest system of using flat plates under the side guide plates solves both problems.

The lower face of the tube is supported flat.

The flat lower plates are attached to the side guide plates and, therefore, move with them eliminating an adjustment.